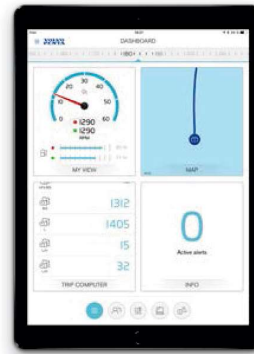


VOLVO PENTA EASY CONNECT



Volvo Penta Easy Connect gives you a dashboard-style overview of boat and engine data, route information, and more – via Bluetooth®, directly on your smart devices. All you need is the Easy Connect Interface connected to your engine, and the Easy Connect app installed on your tablet or smartphone. The

functions also make it an ideal complement to the mounted instruments at the helm. But the experience doesn't just stay onboard. You can easily access saved routes and boat data from home – reliving the moments, or plan for your next trip.



Share the experience

Let your friends and family monitor the trip onboard with Easy Connect. The app lets them follow and save routes, with the possibility to share them on social media – while still keeping a curious eye on speed and heading. Routes and boat data are automatically stored in the Easy Connect app, and can later be accessed and shared from anywhere (sharing function requires an Internet connection).

Interact smart with your Volvo Penta dealer

Easy Connect makes it possible to share diagnostic trouble codes with your selected Volvo Penta dealer, including; serial number and engine hours. A useful function when booking a service or inspection – allowing your dealer to prepare service and help more efficient.

Easy installed interface

To get started, the Easy Connect interface plugs directly into the EVC multilink at the helm station, or into the engine harness on non-EVC gasoline engines.

NMEA functionality

The Easy Connect interface includes NMEA2000 functionality. This means it can also be connected to an existing NMEA network within the boat. This enables you to access additional data from i.e. speed and depth sensors.

In addition, the Easy Connect interface can be used to convert engine data into NMEA2000 compatible chart plotters/multi-function displays onboard.

Compatible engines

The product is available for diesel and gasoline engines with Electronic Vessel Control (EVC) in single and twin installations. It's also available for non-EVC gasoline engines from model year 2006 in single installations.

Download the Volvo Penta Easy Connect app

The application is available on iOS 10 and later. It will be available on Android as of the second quarter of 2018. For more information, including system requirements, visit www.volvopenta.com/easyconnect.

Featured data within the app

The Easy Connect app is capable of showing data provided by your engine, as well as information from additional sensors and functionality installed in your boat:

Engine and boat data	
Engine speed	Battery voltage
Engine hours	Warnings and alarms
Oil pressure	Coolant temperature
Diagnostic trouble codes	Boat speed ³⁾
Depth ²⁾	Rudder position ^{1) 2)}
Fuel tank level ^{1) 2)}	Drive trim (Aquamatic) ¹⁾

With Trip computer software (EVC)	
Average fuel economy ²⁾	Trip distance
Distance to empty ²⁾	Fuel used
Fuel economy ²⁾	Fuel rate
Time to empty ²⁾	

Additional features	
Journeys ³⁾	Share journeys ⁴⁾
Share diagnostic trouble codes ⁴⁾	

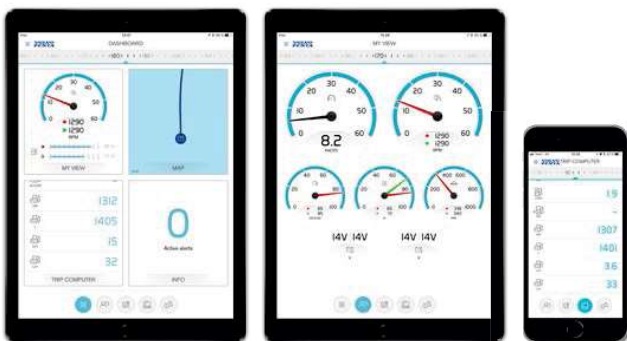
1) Requires EVC 2) Requires additional sensors 3) Requires additional sensors or mobile device GPS 4) Sharing function requires an internet connection

Easy Connect interface kits

Part no	Description
23194818	Interface kit, diesel* and gasoline with EVC
23194833	Interface kit, non-EVC gasoline MY 2006 and later
3883170	Adapter cable, non-EVC gasoline MY2006

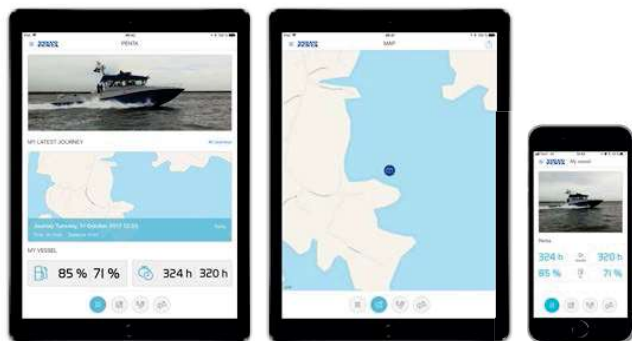
*Diesel engines with EVC-A require an additional adaptor cable, which will be available as of mid 2018.

Captain View (connected)



When onboard, Easy Connect provides a complete view of the boat's vital information in real time. Switch between different menu screens, showing boat speed, engine speed, maps etc. and share your experiences on social media.

Home View (not connected)



Home View stores your past journeys so that you can recreate them and share on social media. You can also access an overview of key data such as fuel tank level and engine hours, and e-mail engine status to your Volvo Penta dealer.

iOS® is a registered trademark of Cisco Systems®, Inc. (used under license by Apple®, Inc.). Android® is a registered trademark of Google®, Inc. Bluetooth® is a registered trademark of Bluetooth SIG, Inc.